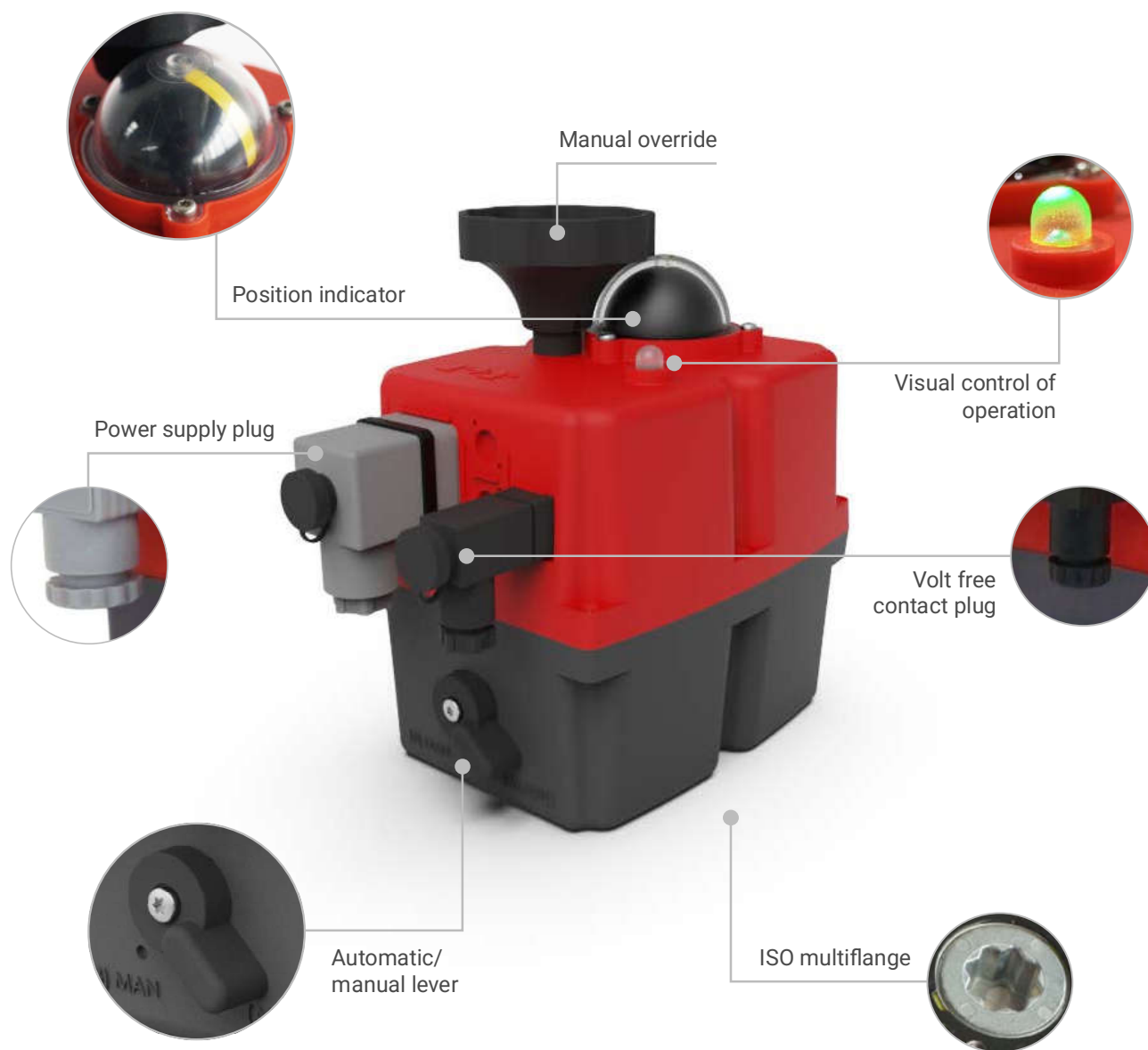


ACTUATOR PART LIST

MODELS: S20, S35, S55, S85, B20, B35, B55, B85



BSR KIT J4C 20/85

The BSR safety block system is an automatism that, when coupled to the J4C multi voltage electric actuators, lets the valve situate in a preferable position NC or NO, when there is a power supply failure. Inside of the housing there are a BSR print circuit board and a battery pack, which is kept in continuous charge.

In case of the valve is not in the preferable position and there is a power supply cut, the BSR system returns the valve back to the preferable position by means of the batteries tension, operating as a "single acting" actuator.



Outside box



Inside box

SPECIFICATIONS

ACTUATOR MODEL	S20-B20	S35-B35	S55-B55	S85-B85
No Working operation without recharge, with 100% battery charge	min. 5 operations, works until battery discharged *			
Recharge time / working operation	15 min	21 min	48 min	58 min
Battery consumption / working operation	2,2 W	3,0 W	6,8 W	8,3 W
Full charge time 100%	28 h			
Nominal capacity +/- 5%	2200 mAh			
NO or NC Features (*)	Jumper			
Current/one working operation with battery	10,1 mA	14 mA	31,6 mA	38,6 mA
Battery charge	40 mA			
Weight	0,31 Kg			

* Our actuators are not designed to operate in single-acting mode. The BSR (Battery System Returns) is provided exclusively as an emergency system in case of power loss. It is recommended to always keep them connected to the main electrical grid for reliable performance

* We strongly recommend to provide a full charge to the batteries, before mounting the BSR Kit on the Actuator.

ASSEMBLY INSTRUCTIONS - BSR KIT 20/85



Very important!

Please, follow these instructions step by step. If the connector of the battery pack is plugged into the "BSR" pcb, before arriving to point 7, the pcb could be damaged.

KIT COMPONENTS

Element A - 1 BSR PCB.

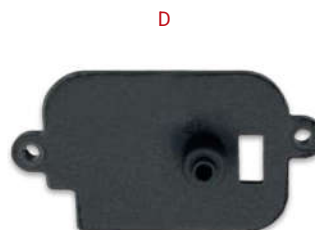
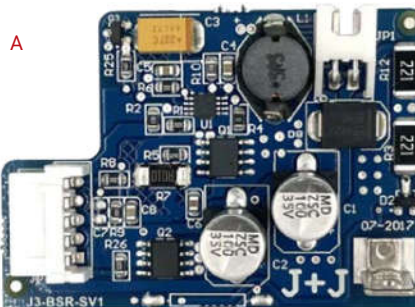
Element B - 1 Lower battery support.

Element C - 1 Battery pack.

Element D - 1 Upper battery support.

Element E - 3 Sheet metal Fixing screws.

Element F - 2 Plastic Fixing screws.



* Fill in the document inside the kit, and send it to e-mail: info@jjbcn.com or the fax number (93 871 32 72), shown in the document.

KIT BSR 20/85 ASSEMBLY INSTRUCTIONS – PAGE 1/2

1



Remove the screw, which is fixing the hand wheel.

2



Remove the 6 screws, which are fixing the body to the cover of the actuator.

3



Carefully lift the cover.

4



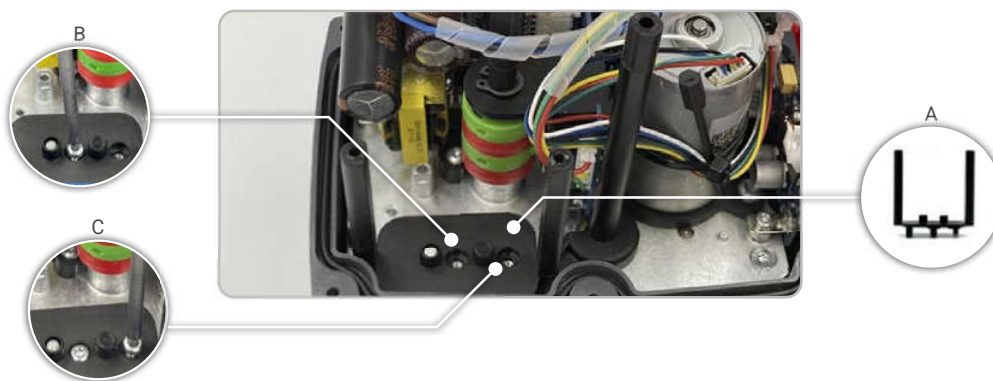
Take the BSR PCB (**Element A**) from the KIT and connect it to the actuator PCB, by using the connector shown in the picture.

5



Fix it to the actuator metal plate, by using the Sheet metal fixing screw (**Element E**).

6



Put the lower battery support (**Element B**). See (Fig.6A). Fix it by using 2 Sheet metal fixing screws (**Element E**) (Fig.6B & 6C).

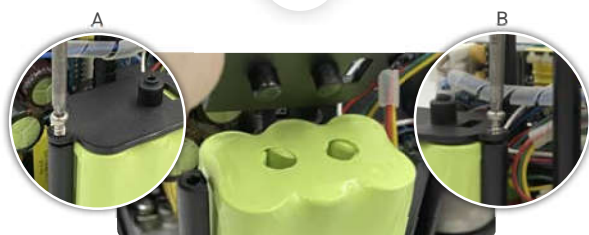
KIT BSR 20/85 ASSEMBLY INSTRUCTIONS – PAGE 2/2

7



Place the battery pack (**Element C**) on the lower battery support (**Element B**) (Fig.7B). The battery cables should remain on the bottom part. Put the cables, as shown in the picture (Fig.7A). Connect the battery cables to the BSR PCB (**Element A**), as per (Fig.7C).

8



Place the upper battery support and fix it to the columns of the lower battery support (**Element B**), by using the Plastic fixing screws (**Element F**).

9



BSR Configuration NO or NC:
NC (normally close) SELDIR jumper ON.
NO (normally open) SELDIR jumper OFF.

10



Carefully mount the cover, minding the cables not to be pressed.

11



Fix the cover to the body by using the 6 screws.

12



Mount the hand wheel on the shaft and fix it by using the screw.



Num: RH-AEE-8760

If the WEEE (Waste Electrical and Electronic Equipment) contains batteries, they must be removed and deposited separately for proper management before being deposited at the collection facilities. Batteries may contain hazardous substances that can harm the environment and human health if mishandled or disposed of improperly. Therefore, it is important to deposit them in specific containers for recycling and proper treatment. In some countries, there are selective collection programs for used batteries in supermarkets, electronic stores, or other establishments.